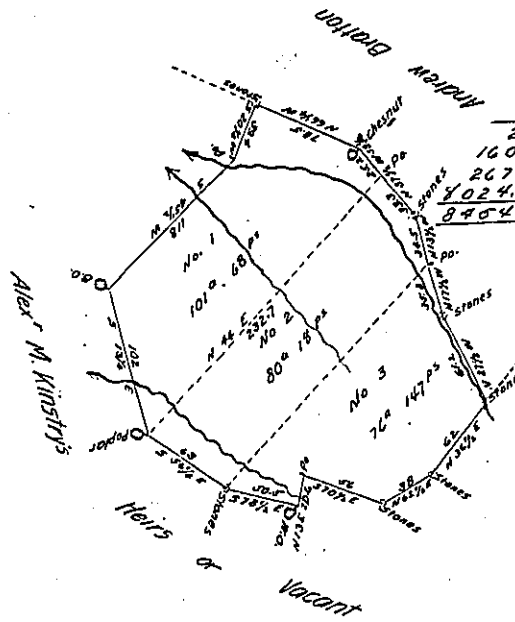


253.00	396.93
20.37	17.53
177.00	198.63
5060.00	198.65
5077.71	2778.51
	396.93
	6966.1213

467.52	476.14
49.84	59.29
1870.08	4285.26
374.016	95.228
4207.68	1904.56
18700.8	23867.0
23301.1968	25849.6406



26747	310.43	191.94
31.61	14.69	36.96
26778.7	27.9337	1091.89
160.442	136.258	163.782
26747	2753.44	1091.88
4024.1	3104.3	5459.4
8454.7267	5801.9367	6725.9804

437.27	99.14	84.17
33.67	35	72.71
30.60.89	495.70	4417
262.362	2974.2	58.919
1311.81	3469.90	163.34
13118.1		6783.6
14722.8809		6961.7007

414.60	23.38	374.93
33.50	99.29	46.41
20.9300	2104.2	37493
209.300	4676	149.972
1255.80	210.42	3249.58
12558.0	2104.2	14997.2
14044.0300	2321.4002	17400.5013

			N	S	E	W	M. Dist	N. Area	S Area	
1	S 20 1/4 W	39.4	—	36.96	—	13.64	191.94	—	6725.9804	
2	S 45 1/2 W	114.0	—	82.71	—	84.17	34.17	—	6961.7007	
3	S 13 1/4 E	102.0	—	99.29	23.38	—	46.76	—	2321.4002	
4	S 52 1/4 E	63.0	—	35.00	52.38	—	151.52	—	3469.9000	
5	S 70 1/2 E	50.5	—	14.34	48.42	—	243.36	—	2467.1396	
6	N 13 E	20.6	20.07	—	4.64	—	257.64	5077.7100	—	
7	S 70 1/2 E	56.0	—	14.69	52.79	—	310.43	—	5801.9367	
8	N 62 1/2 E	38.0	17.55	—	33.71	—	396.93	6966.1215	—	
9	N 35 1/2 E	62.0	49.44	—	36.38	—	467.52	33301.1968	—	
10	N 27 1/2 W	61.2	54.29	—	—	24.26	504.40	25349.6406	—	
11	N 17 1/2 W	35.3	33.67	—	—	10.61	476.14	14722.8809	—	
12	N 13 1/2 W	34.5	33.55	—	—	8.06	418.60	14044.0300	—	
13	N 37 1/2 W	58.5	46.41	—	—	35.61	410.54	17400.5013	—	
14	N 62 1/2 W	78.5	31.61	—	—	71.35	374.93	8454.7267	—	
			286.99	236.99	252.20	252.20		115416.3078	28144.0580	
								24148.0580		
								187664.7498		
								42834.3749		

199.94
14.34
7.9976
59.982
799.76
1999.4
2867.1396

169.4	40834.3749	1258.73ps
392		
9914		
4480		
14343		
130568		
1067754		
742		
334		
318		
16		

A Draught of 258^o 73 perches of land with allowance of 6 per cent for roads &c. Situate in Bratton (late Wayne) Township Mifflin County Penn^a composed of three smaller tracts vis- No 1 Surveyed April 30th 1787 Wt to John Carlisle dated Feb 28th 1787- No. 2 Surveyed March 23rd March 23rd 1853 Wt to Richeson Bratton dated dated April 5th 1853 - No 3. Surveyed May 3rd & 4th 1831 Wt to Samuel Carlisle in trust dated April 20th 1815. The whole tract Resurveyed & found as above shown March 23rd & 24th 1853 for Richeson Bratton the present owner who desires a patent for it.

John R. Weeks C.S.

To J. Porter Brawley Esq
Surveyor General of Penn^a

IN TESTIMONY that the above is a copy of the original remaining on file in the Department of Internal Affairs of Pennsylvania, made conformably to an Act of Assembly approved the 16th day of February, 1833, I have herunto set my Hand and caused the Seal of said Department to be affixed at Harrisburg, this

eighteenth day of August 1905

Loac B. [Signature]
Secretary of Internal Affairs.